



fix CHANNEL SUPPORT SYSTEM



STRUT CHANNELS/SLOTTED CHANNEL SUPPORTS.

Finish : All G-Fix Channel Supports are Electro-Galvanized post manufacture finish as standard, Other options are available on request are Hot Dip Galvanised (suffix 'HDG'), Zinc Flake (suffix 'ZF') & Stainless Steel (suffix 'SS').



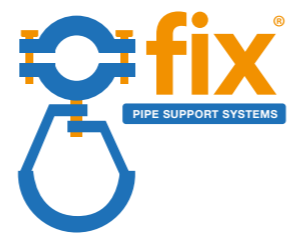
THREADED ROD & FASTENERS

Materials : Mild steel, carbon steel, Alloy steel & Stainless steel.

STRUT BOLTS/ANCHOR BOLTS/ DROP IN ANCHORS/DRAW IN ANCHORS



Finish : Electro-Galvanized, Hot Dip Galvanized , Zinc Flake , Nickel, Yellow, Cadmium etc.



Adjustable Clevis Hanger

EPDM Lined Split Clamp

Riser Clamp



Plain Split Clamp



Sprinkler Pipe Hanger



EPDM Lined U Strap Clamp



Rubber Support Insert



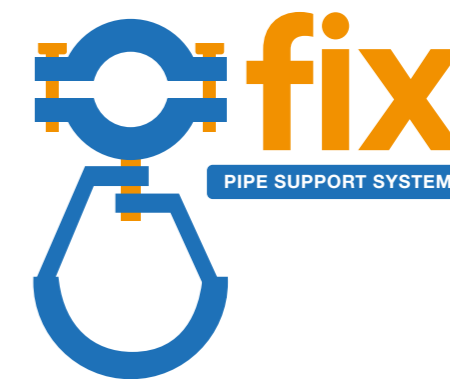
U Bolt



PIPE HANGERS AND SUPPORTS

MADE IN INDIA

PRODUCT PROFILE



PIPE HANGERS AND SUPPORTS

MADE IN INDIA



EPDM LINED SPLIT CLAMP (GFSC-R)

Split ring type of steel pipe clamps with EPDM lining with integral fixing nut. Dual twin nut for easy and convenience during installation.

UL listed for sizes 1/2" to 3"

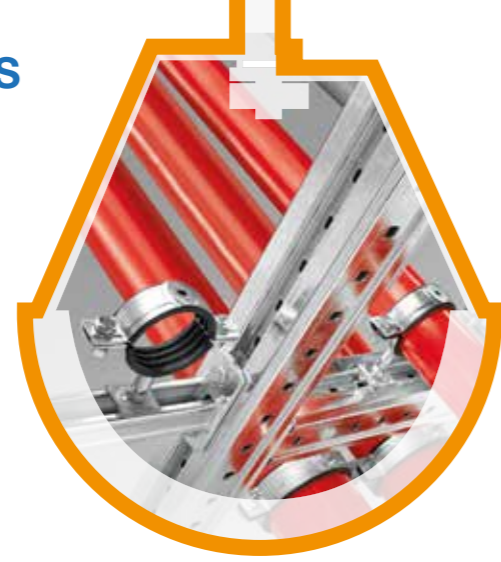


EPDM LINED U BOLTS (GFUB-R)

Heavy duty U-Bolts designed with EPDM sleeves to grip, guide or support plain or insulated piping.

Product compliance to : US standards MSS-SP58 & MSS-SP69 (Type 24), Federal Specification WW-H-171E & A-A-1192A (Type 24).

Finish : All G-Fix Pipe Hangers and Supports are Electro-Galvanized post manufacture finish as standard, Other options are available on request are Hot Dip Galvanised (suffix 'HDG'), Zinc Flake (suffix 'ZF') & Stainless Steel (suffix 'SS').



EPDM LINED U STRAP CLAMP (GFUS-R)

A standard pipe strap clamp designed with EPDM lining for clamping plain or insulated pipe to structural channel supports such as trapeze hangers.

Product compliance to : US standards MSS-SP58 & MSS-SP69 (Type 26), Federal Specification WW-H-171E & A-A-1192A (Type 26).



EPDM LINED RISER CLAMP (GFRC-R)

Rugged clamp designed with high grade EPDM lining provides ideal solution for rigid supports or guides for all types of vertical piping.

Product compliance to : US standards MSS-SP58 & MSS-SP69 (Type 8), Federal Specification WW-H-171E & A-A-1192A (Type 8).



ADJUSTABLE CLEVIS HANGER (GFCH)

Clevis hanger consist of a yoke and a support strap design, suitable for any application involving suspension of stationary piping. The design allows substantial vertical level adjustment of pipe after installation.

Product compliance to : US standards MSS-SP58 & MSS-SP69 (Type 1), Federal Specification WW-H-171E & A-A-1192A (Type 1).

UL listed for sizes 1" to 8"



U BOLTS (GFUB)

Heavy duty U-Bolts designed to grip, guide or support plain or insulated piping.

Product compliance : US standards MSS-SP58 & MSS-SP69 (Type 24), Federal Specification WW-H-171E & A-A-1192A (Type 24).

UL listed for sizes 3/4" to 12"



SPRINKLER PIPE HANGER (GFSH)

Adjustable swivel ring type steel band hanger, recommended to provide vertical support to non-insulated piping system. By adjusting the position of the sprinkler nut on the hanger rod at the top of the hanger, pipe elevation can be altered.

Product compliance to : US standards MSS-SP58 & MSS-SP69 (Type 10), Federal Specification WW-H-171E & A-A-1192A (Type 10).

UL listed for sizes 3/4" to 8"

Finish : All G-Fix Pipe Hangers and Supports are Electro-Galvanized post manufacture finish as standard, Other options are available on request are Hot Dip Galvanised (suffix 'HDG'), Zinc Flake (suffix 'ZF') & Stainless Steel (suffix 'SS').



U STRAP CLAMP (GFUS)

A standard pipe strap clamp designed for clamping plain or insulated pipe to structural channel supports such as trapeze hangers.

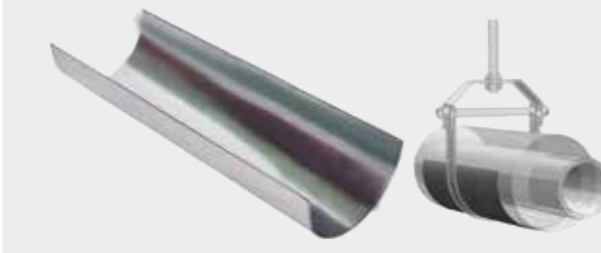
Product compliance to : US standards MSS-SP58 & MSS-SP69 (Type 26), Federal Specification WW-H-171E & A-A-1192A (Type 26)



RISER CLAMP (GFRC)

Rugged clamp designed provides ideal solution for rigid supports or guides for all types of vertical piping.

Product compliance : US standards MSS-SP58 & MSS-SP69 (Type 8), Federal Specification WW-H-171E & A-A-1192A (Type 8).



INSULATION PROTECTION SHIELD (GFIPS)

These are specifically used in protecting the pipe insulation against crushing. Recommended when the piping is supported on rollers.

Product compliance to : US standards MSS-SP58 & MSS-SP69 (Type 40), Federal Specification WW-H-171E & A-A-1192A (Type 41).



PIPE ROLLER STAND (GFPRS)

Pipe Roller Stand and Pipe Roller Chair are designed to facilitate axial movement of supported pipes caused by thermal expansion/contraction or any mechanical shifting, but where no vertical adjustment is required.

Product compliance to : US standards MSS-SP58 & MSS-SP69 (Type 44), Federal Specification WW-H-171E & A-A-1192A (Type 45).

Finish : All G-Fix Channel Supports are Electro-Galvanized post manufacture finish as standard, Other options are available on request are Hot Dip Galvanised (suffix 'HDG'), Zinc Flake (suffix 'ZF') & Stainless Steel (suffix 'SS').



PLAIN SPLIT CLAMP (GFSC)

Split ring type of steel pipe clamps with integral fixing nut, is designed for support plain and insulated horizontal piping. Dual twin nut for easy and convenience during installation.



RUBBER SUPPORT INSERTS (GFRSI)

Rubber supports inserts (RSI) is a eco-friendly product, made of compounded rubber and is designed to carry maximum operating pipe loads as recommended span by MSS SP69 (US) standard. RSI is primarily used in preventing crushing of the insulation at the pipe support location of a chilled water, condenser water and domestic hot/cold water installations. These are available in various insulation thickness.



PIPE ROLLER CHAIR (GFPRC)